

KEMA DLMS Analyzer

Introduction

Devices communicating can be a wonderful thing to watch. Bytes flying from one device to the other and back. But what are they actually talking about? With most analyzers you need to be a protocol expert to understand what is displayed on the screen. Using the KEMA DLMS Analyzer you do not need to be an expert at all as the information is displayed in a easy to understand human readable way.

The KEMA DLMS Analyzer is the tool that is supportive at early stages of product development, as well as during interoperability tests in the field.

Features of the KEMA DLMS Analyzer

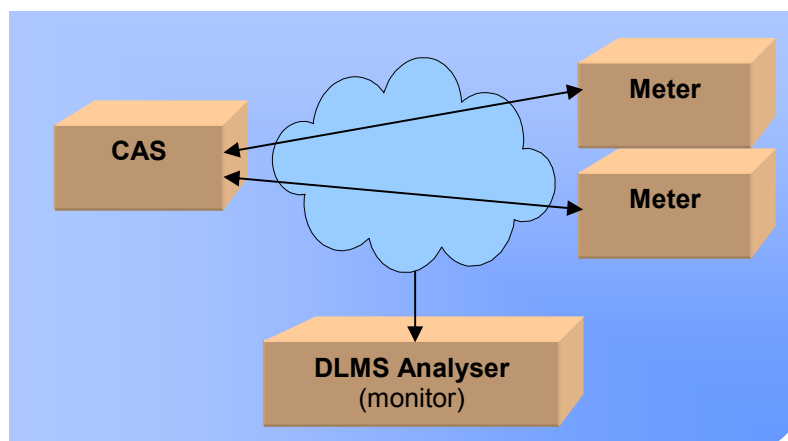
The DLMS Analyser is a test tool designed for monitoring communication between several devices that communicate using the DLMS protocol.

This easy – to – use protocol monitor has the following features:

Versatile fields of application

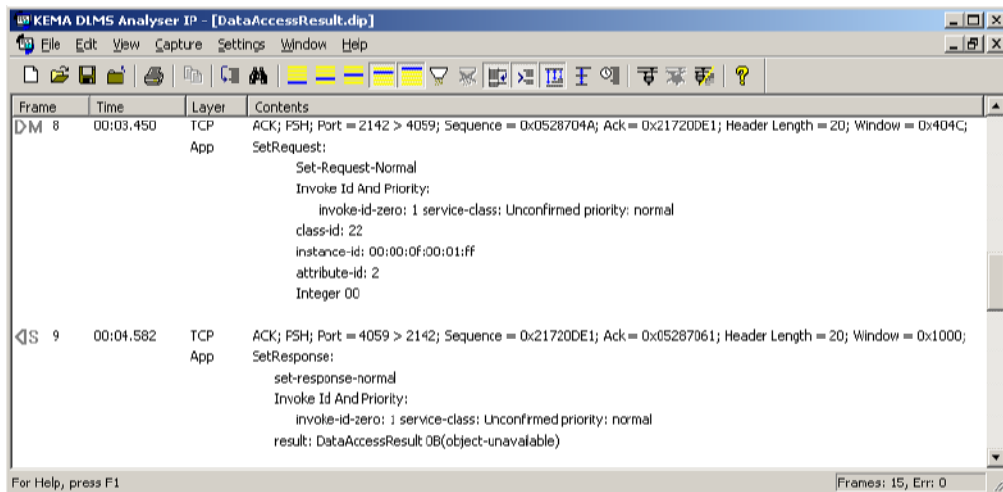
Using the DLMS Analyzer is a good choice because it helps you to detect communication issues quickly in several real life situations:

- Debugging early – stage implementations of DLMS.
- Analyze whether a running communication is working properly.
- Need to filter on items such as specific addresses, message types or errors during meter readings.
- Perform interoperability tests in a multi-vendor environment.
- Real-time monitoring of the communication between 2 or more devices, such as a Central Access System (CAS) and electricity meter(s).



Decoding frames in a graphical user interface (GUI)

The DLMS Analyzer decodes all the captured frames into easy to read text. All DLMS/COSEM message types are supported, for both Logical Names and Short Names message types. A lot of features are added to the DLMS Analyzer to let you easily change the display to get an optimal view on the communication in the way you want it.



For example, you can hide or show several communication layers, even after the capture has been made.

Every frame gets an accurate time stamp. This time stamp can be displayed in several ways like absolute time or the time elapsed since the previous frame.

Everything you see in the DLMS Analyzer window can be saved to a text file or can be copy-pasted to a text editor or an e-mail. This allows you to quickly and clearly discuss issues about the communication with other people who work in the project.

Analysis & Error detection

The DLMS Analyzer does not only decode the frames, it also analyzes if the communication is correct. It detects errors in frames and errors between frames. All errors are clearly marked in red.

The DLMS Analyzer enables you to search the errors of the communication or on any part of the captured frames. Filters can be used to display only the information you are interested in, e.g. only the frames with errors or only frames for a certain address.

Supported communication profiles

The DLMS Analyzer is available in 2 versions: One for DLMS over TCP / IP and the other for analysing DLMS communication over HDLC. This version is often used in combination with reading via an optical head. Please do not hesitate to contact KEMA if you wish support for other communication profiles.

Contact

KEMA Nederland B.V.
 P.O. box 9035, 6800 ET
 Arnhem, The Netherlands
 Tel: +31 26 356 2025
 Fax: +31 26 351 3683
 Email : sales@kema.com
 Website : www.kema.com/pctc